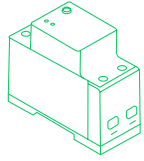
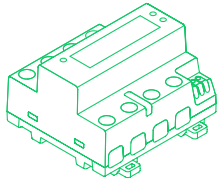


The Omhero Master package contains:



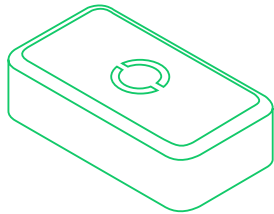
- Omhero Master (PCH-0001);
- 1 m cable with a 1x0.5 mm² cross-section.

The Omhero Master 3 package contains:



- Omhero Master 3 (PCH-0005).

The Omhero Plug package contains:



- Omhero Plug (PCH-0002)
- 0.30 m cable with a 3x1 mm² cross-section + IEC320/C13 connector + CEE 7/7 plug
- 0.30 m cable with a 3x1 mm² cross-section + IEC320/C13 connector + 3x alligator clip terminals
- Instruction manual

Visit the website www.omhero.tech or www.prycamhome.com

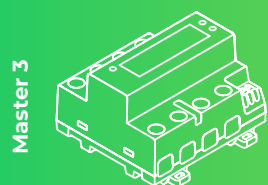


Omhero Business is the ideal solution for monitoring electrical systems with the goal of increasing safety and ensuring full functionality and energy efficiency.



Advanced solutions for managing complex environments

Monitoring electrical consumption, studying its evolution, and optimizing it is essential for all complex commercial and residential entities, whether small or medium-sized. This includes environments such as hospitals, hotels, schools, universities, condominiums, residences, and housing cooperatives.



Omhero serves Energy Managers, Property Managers, Condominium Administrators, maintenance teams, and maintenance companies.

A new service for customers

Thanks to Omhero Business Cloud, Energy Managers, Property Managers, maintenance teams, and companies can become genuine service providers for their end users.

One solution, many functionalities:

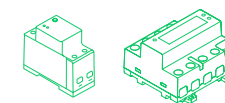
- Real-time measurement of system parameters;
- Voltage drop measurement;
- Measurement of earth loop impedance
- Circuit breaker test
- Residual current device (RCD) test

Easy to install, simple to use

What you need:



You need a **smartphone** to download the **app** that guides you step by step through the device installation process



The **Master** unit is inserted into the DIN rail of the main electrical panel, and through the **Plug**, it conducts tests at all measurement points within the circuit.



OMHERO APP PRO
for electricians

During installation and maintenance procedures, the **app** allows access to all installed **Master** devices and real-time monitoring of their parameters.

The solution dedicated to business and enterprise users

An unlimited number of devices. No matter how many Omhero devices you manage, Omhero's Business Cloud allows you to manage an unlimited number of devices simultaneously and in real-time on your desktop.

Comparison of managed devices. Monitoring consumption and comparative analysis of energy efficiency allows for objective evaluation and identification of potential optimizations.



Omhero Cloud
The web app dedicated to business users.

A simple and intuitive dashboard

/ Consumption: It's possible to visualize the daily consumption trends in terms of costs and emitted CO2.

/ Power Quality: You can monitor the electrical load and receive notifications about residual power in the system and any power outages.

/ Status of connected devices and the overall system.